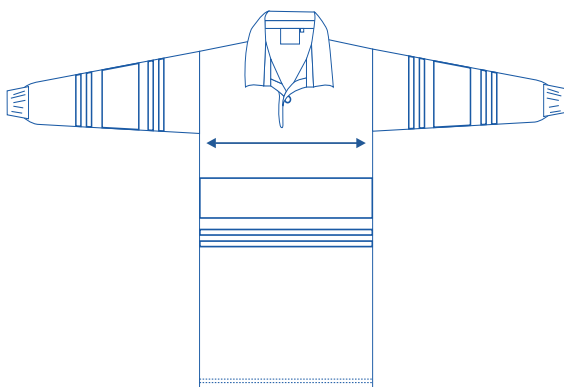


# SIZE CHART



| Rugby Top |    |      |    |    |    |    |    |    |    |    |    |    |     |  |
|-----------|----|------|----|----|----|----|----|----|----|----|----|----|-----|--|
| Size      | 2  | 4    | 6  | 8  | 10 | 12 | 14 | 16 | S  | M  | L  | XL | 2XL |  |
| 1/2 Chest | 33 | 36.5 | 38 | 42 | 45 | 47 | 49 | 51 | 53 | 56 | 59 | 62 | 65  |  |

## How to select your size:



- 1.** Find a similar fitting garment to the item you wish to purchase.
- 2.** Lay the garment flat on a hard surface.
- 3.** Measure the chest in centimetres as outlined in the diagram.
- 4.** Select the size closest to your measurement - we recommend selecting the larger size if your measurement is in between sizes.

### Note:

- Exchange is available for incorrect size selection.
- Not all sizes are carried - for sizes not carried, contact the Uniform Shop to organise a Special Make-Up Order.