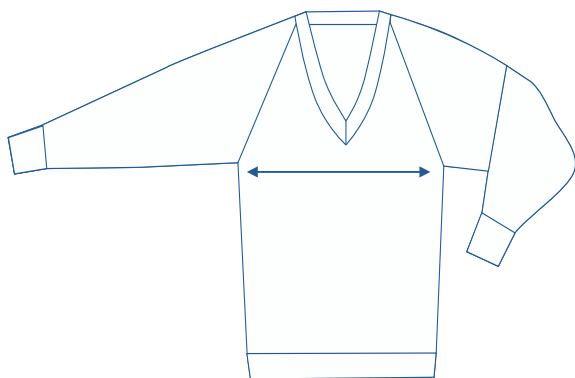


# SIZE CHART



| Fleecy    |      |    |      |    |      |    |      |    |      |     |  |
|-----------|------|----|------|----|------|----|------|----|------|-----|--|
| Size      | 10   | 12 | 14   | 16 | S    | M  | L    | XL | 2XL  | 3XL |  |
| 1/2 Chest | 47.5 | 50 | 52.5 | 55 | 57.5 | 60 | 62.5 | 62 | 67.5 | 70  |  |

## How to select your size:



- 1.** Find a similar fitting garment to the item you wish to purchase.
- 2.** Lay the garment flat on a hard surface.
- 3.** Measure the chest in centimetres as outlined in the diagram.
- 4.** Select the size closest to your measurement - we recommend selecting the larger size if your measurement is in between sizes.

### Note:

- Exchange is available for incorrect size selection.
- Not all sizes are carried - for sizes not carried, contact the Uniform Shop to organise a Special Make-Up Order.