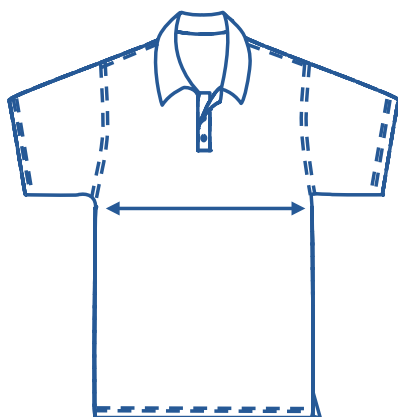


# SIZE CHART



Polo												
Size	8	10	12	14	16	S	M	L	XL	2XL	3XL	
1/2 Chest	44.5	47	49.5	52	54.5	57	59.5	62	64.5	67	69.5	

## How to select your size:



1. Find a similar fitting garment to the item you wish to purchase.
2. Lay the garment flat on a hard surface.
3. Measure the chest in centimetres as outlined in the diagram.
4. Select the size closest to your measurement - we recommend selecting the larger size if your measurement is in between sizes.

### Note:

- Exchange is available for incorrect size selection.
- Not all sizes are carried - for sizes not carried, contact the Uniform Shop to organise a Special Make-Up Order.