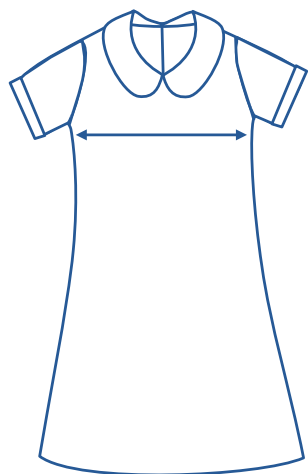


SIZE CHART



Dress														
Size	2	4	6	8	10	12	14	16	18	20	22	24	26	
1/2 Chest	35	37.5	40	42.5	45	47.5	50	52.5	55	57.5	60	62.5	65	

How to select your size:



- 1.** Find a similar fitting garment to the item you wish to purchase.
- 2.** Lay the garment flat on a hard surface.
- 3.** Measure the chest in centimetres as outlined in the diagram.
- 4.** Select the size closest to your measurement - we recommend selecting the larger size if your measurement is in between sizes.

Note:

- Exchange is available for incorrect size selection.
- Not all sizes are carried - for sizes not carried, contact the Uniform Shop to organise a Special Make-Up Order.