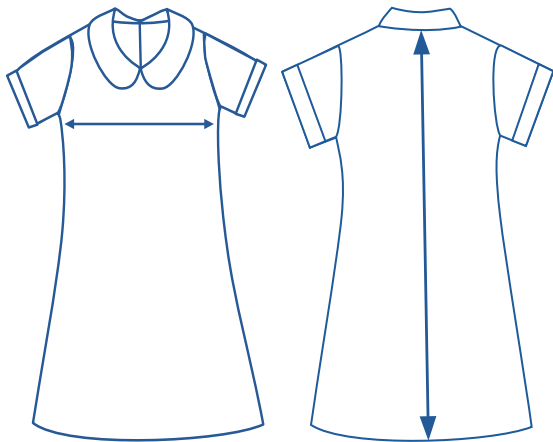




# Alinta Apparel Size Chart

Dress																
Alinta Size	J2	J4	J6	J8	J10	J12	J14	L8	L10	L12	L14	L16	L18	L20	L22	
1/2 Chest Measurement (cm)	33.5	36	38.5	41	43.5	46	48.5	51	53.5	56	58.5	61	63.5	66	68.5	
Centre Back Length (cm)	72	77.5	82	86.5	91	96.5	102	107.5	112.5	117.5	122.5	123	124	125	126	

## How to select your size:



- 1 Find a similar fitting garment to the item you wish to purchase.
- 2 Lay the garment flat on a hard surface.
- 3 To get the 1/2 chest measurement, measure the chest in centimetres as outlined in the diagram. To get the centre back length measurement, measure from the seam at the back of the neck to the hem as outlined in the diagram.
- 4 Select the size closest to your measurement, remembering to select the larger size if your measurement is in between sizes.

### Note:

- Exchange is available for incorrect size selection.
- Not all sizes are carried. For sizes not carried, contact the Uniform Shop to organise a Special Make-Up Order.