

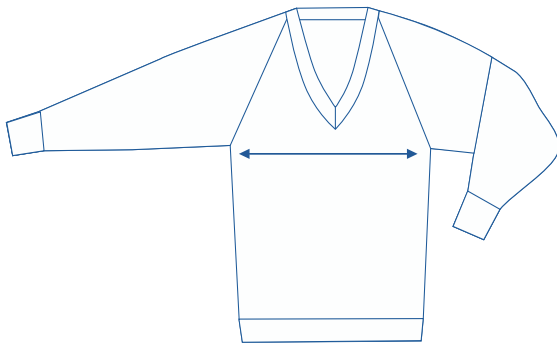


# Alinta Apparel Size Chart

## Knitted Jumper

Alinta Size		4	6	8	10	12	14	16	18	20	22 & 24	26	28
Ranier Size	4	6	8	10	12	14	16	18	20	22	24	26	28
1/2 Chest in cm	31	33.5	36	41	43.5	46	48.5	51	53.5	56	58.5	61	63.5

## How to select your size:



- 1 Find a similar fitting garment to the item you wish to purchase.
- 2 Lay the garment flat on a hard surface.
- 3 Measure the chest in centimetres as outlined in the diagram.
- 4 Select the size closest to your measurement, remembering to select the larger size if your measurement is in between sizes.

### Note:

- Exchange is available for incorrect size selection.
- Not all sizes are carried. For sizes not carried, contact [info@alinta.com](mailto:info@alinta.com) to organise a Special Make-Up Order.