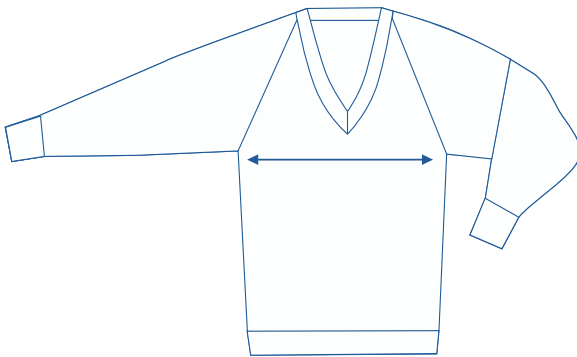




# Alinta Apparel Size Chart

Knitted Jumper															
Alinta Size	4	6	8	9	10	12	14	16	18	20	22	24	26	28	
1/2 Chest Measurement (cm)	31	33.5	36	38.5	41	43.5	46	48.5	51	53.5	56	58.5	61	63.5	

## How to select your size:



- 1 Find a similar fitting garment to the item you wish to purchase.
- 2 Lay the garment flat on a hard surface.
- 3 Measure the chest in centimetres as outlined in the diagram.
- 4 Select the size closest to your measurement, remembering to select the larger size if your measurement is in between sizes.

### Note:

- Exchange is available for incorrect size selection.
- Not all sizes are carried. For sizes not carried, contact the Uniform Shop to organise a Special Make-Up Order.