

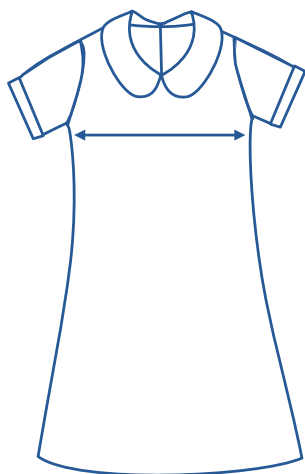


Alinta Apparel Size Chart

Dress

Alinta Size	J2	J4	J6	J8	J10	J12	J14	L8	L10	L12	L14	L16
1/2 Chest Measurement (cm)	34	36	38.5	41	43.5	46	48	50	52.5	55	57.5	60

How to select your size:



- 1 Find a similar fitting garment to the item you wish to purchase.
- 2 Lay the garment flat on a hard surface.
- 3 Measure the chest in centimetres as outlined in the diagram.
- 4 Select the size closest to your measurement, remembering to select the larger size if your measurement is in between sizes.

Note:

- Exchange is available for incorrect size selection.
- Not all sizes are carried. For sizes not carried, contact the Uniform Shop to organise a Special Make-Up Order.